



Careers Education, Information Advice & Guidance (inc. Provider Access) Policy

Date Published	May 2018
Version	3
Last Approved Date	June 2022
Review Cycle	Biennial
Next Review Date	June 2024

“Learning together, to be the best we can be”

1. Scope

- 1.1. This policy relates to all academies across Nexus MAT where provision is in place for Careers Education in Key Stages 3, 4 and 5 (Inc KS2 where appropriate).

2. Context

- 2.1. This document sets out the Nexus Multi Academy Trust Careers policy including arrangements for managing the 'access' of providers to pupils in academies.
- 2.2. This 'access' is for the purpose of giving pupils information about a provider's education, work or training offer. This complies with the MAT's legal obligations under: Section 42A of the Education Act 1997 which requires governing bodies to ensure that all registered pupils at the school are provided with independent careers guidance from year 8 (12-13 year olds) to year 13 (17-18 year olds) and is in line with the DfE legislation **Careers guidance and access for education and training providers**. Statutory guidance for governing bodies, school leaders and school staff (January 2018)
- 2.3. In addition, the Education Act (2002) places a statutory duty on schools to secure access for pupils to independent and impartial careers guidance that promotes the best interests of the pupils to whom it is given and includes information on all options available to them, including apprenticeships and other work-based learning.
- 2.4. Key points in the Statutory Guidance includes "*the duty on schools, to secure independent careers guidance for all year 8-13 pupils. This is intended to expand advice and guidance for young people so they are inspired and motivated to fulfil their potential*".
Ofsted has also updated its school inspection handbook to strengthen the focus on careers guidance, including by clarifying that inspectors will always report where a school falls short of the requirements of the provider access legislation ('Baker Clause'), as well as considering how it affects a school's inspection grade.

3. Our strategic intent

- 3.1. Nexus academies will support every pupil to realise and develop high aspirations *and* consider a broad and ambitious range of careers through a combination of direct/indirect experiences and learning opportunities.

3.2. At Nexus our vision is that we are constantly “**Learning together; to be the best we can be.**”

3.3. In order to be the best and achieve meaningful lifelong outcomes for our pupils we stand by and put our energy into effective working partnerships, exemplified by part of our mission statement:

Our employees and partners are passionate about being the best that they can be; providing opportunities for enriched learning and pathways to employment and independence.

3.4. We aim to inspire every pupil through ‘real-life’ contacts with the world of work as we know this can help them understand where different meaningful choices can take them in the future. Nexus will work with a range of organisations and with local authorities to achieve this for the vulnerable young people placed within our schools.

3.5. Nexus academies will measure the effectiveness of careers activity by considering both the attainment and the destinations of our pupils. Success will be reflected in more numbers progressing to work placements, apprenticeships, traineeships, and other positive destinations such as employment or a further education college. This will help to close the gap in destinations between young people from disadvantaged backgrounds and others.

3.6. Nexus academies will provide appropriate ‘Advice and Guidance’ via a qualified Careers Advisor as well as internal school staff as part of a coherent programme of activities that inform, inspire and motivate young people, preparing them for work and helping them to understand where different education and training choices could take them in the future. (This is in line with DfE statutory guidance July 2021)

3.7. We understand this ‘programme’ must take into account pupils’ potential life-long careers not just their immediate 16+, 17+ or 18+ placements.

4. Training

4.1. Key staff in our academies will be identified and encouraged to access and complete appropriate levelled training as a Careers Leader. The designated course will be determined at a suitable level following forthcoming recommendations from both the Nexus MAT Careers Lead and the area Careers coordinators/Advisors.

5. Role and Responsibilities

- 5.1. As the responsible authority, the MAT has a duty to ensure that statutory duties are being exercised effectively and that compliance with guidance is enabled and facilitated at a local academy level.
- 5.2. The individual academy will secure and work directly with its allocated 'Careers Advisor' for expert guidance and advice. This advice and guidance may take many different forms, including planning meetings, networking, practice sharing events, information evenings, outside speakers in classes, general studies programmes, careers fairs meetings with mentors, transition meetings for pupils and advice given on work experience programmes as well as face-to-face interviews with an independent Advisor.
- 5.3. In order to provide for the real needs and circumstances of all our pupils, face-to-face interviews with independent Advisors Advisor may be provided for those pupils to whom the academy deems it to be the most suitable form of support. This will be in addition to or alongside interviews offered by the academy's own careers staff, where information will also be given in a differentiated, impartial way, in line with their communicative needs.
- 5.4. The individual academy will provide information and verbal briefings on pupil profiles to help independent Advisors and mentors to understand their potential outcomes and current performance and will expect this information to be given due consideration and to be used in confidence in line with Data Protection Act (2018).
- 5.5. The individual academy will quality assure careers guidance, including that offered independently, to ensure that pupils are receiving advice that is impartial and is relevant to their needs, and will raise any concerns that might emerge in good time with Advisors.
- 5.6. The individual academy will provide a range of careers activities, which may include work-related learning, work experience and provider accessed events.
- 5.7. The individual academy will work with a range of other schools/providers (Mainstream and Special designation), further education and higher education providers, and work-based training and apprenticeship providers in order to ensure that pupils have access to a range of options at each stage of their education.
- 5.8. The journey of education and lifelong learning can take many different turns and it will be each Academy's responsibility to achieve and sustain a person centred and responsive 'careers offer' throughout the pupil's time with them.

As a reference to work to; the Academy will look to establish a person centred pathway for each pupil, capturing the aspirational goals and planning needed to achieve their desired destination. This individual pathway plan alongside a child's Education, Health & Care Plan will form the key planning and reference tool for the team around the child and act as a reference to the multidisciplinary planning/support required by the pupil going forward.

5.9. Pupils will have access to on-line advice, including the National Careers Service website. Pupils will also be advised of the NCC(National Careers Centre) telephone helpline number. The academy will evaluate its success in supporting pupils to take up education and training which offers good long term prospects through analysis of internal destination measures.

5.10. This data will be shared with the local authority, parents and significant others in line with data protection.

5.11. Effective partnership links are set up with numerous organisations, businesses, training providers and enterprising bodies, some of these include:

- Students/ parents/ carers
- Local SEND transition Officer
- Staff at Annual Reviews and Transition Reviews
- Further Education Colleges
- Enterprise Advisor Network
- Business Education South Yorkshire
- School Governors
- Children's' and Adult Disability Services
- The Careers and Enterprise Company
- Special Schools Employment Forum
- LEAF –Local Employment Advisory Forum
- Job Centre Plus
- National Citizen Service
- The Gatsby Foundation

6. Expectations

6.1. Nexus Multi Academy Trust complies with the following requirements and expectations of its academies:

6.2. The Academy/SLT/Governors must:

- Comply with current duty and allow access to the **full range** of post 16 and 18 providers
- visits must be made available to **all students** in the applicable year group and the school must not do anything to limit pupils from attending.
- An access policy must be in existence and must be available on the school website.
- The Academy must continue to strive towards improving their performance against the Gatsby Benchmarks and all schools are **expected** to meet them fully.

6.3. The Academy is expected to provide effective careers information, education, advice and guidance (CIEAG), in line with the statutory 'Careers guidance and access for education and training providers', to encourage pupils to make good choices and understand what they need to do to succeed in the careers to which they aspire.

6.4. As part of this, it is important that schools understand and meet the requirements of section 42B of the Education Act 1997 (the 'Baker clause'), which came into force in January 2018. Both maintained schools and academies are required by law to:

- provide opportunities for a range of education and training providers to speak to pupils in Years 8 to 13 to inform them about technical education qualifications and apprenticeships
- publish a policy statement setting out the arrangements the school has in place for pupils to access education and training providers
- make sure the policy statement is followed so that all pupils in Years 8 to 13 receive information about the full range of education and training options

6.5. The governing body must make sure that independent careers guidance is provided to all 12- to- 18-year-olds and students aged up to 25 with an education, health and care plan.

6.6. In addition, yrs 8-13 pupil entitlement includes opportunities:

- to find out about education qualifications and apprenticeships opportunities, as part of a careers programme which provides information on the full range of education/training options available at each transition point;

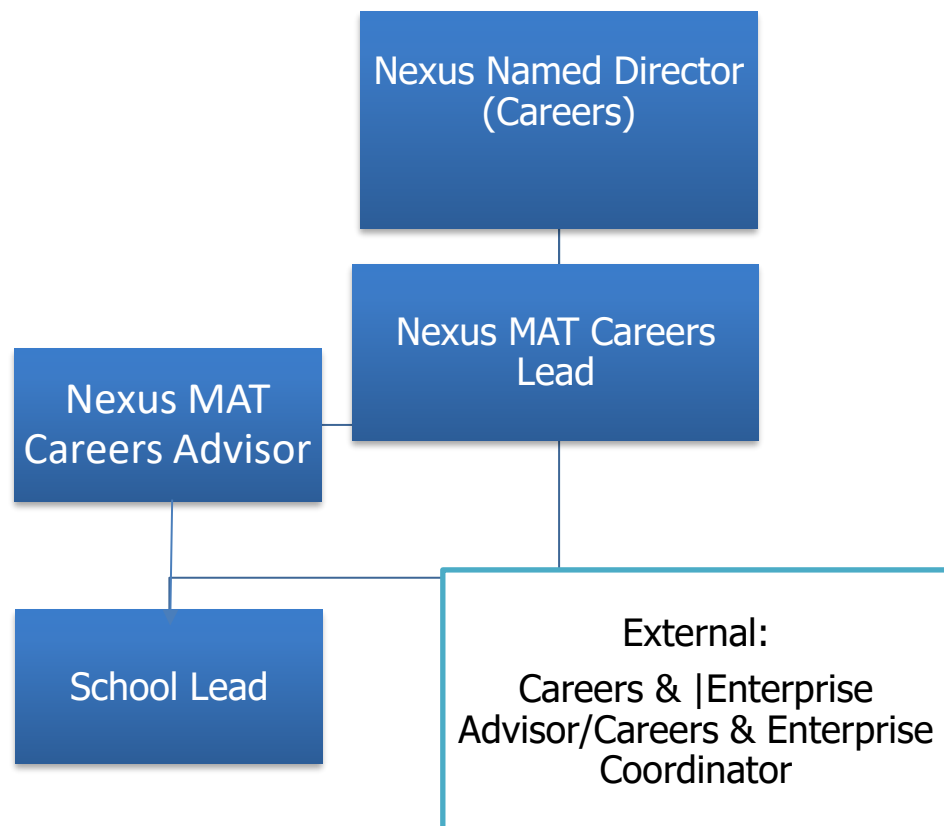
- to hear from a range of local providers about the opportunities they offer, inc – through options events, assemblies and group discussions and taster events;
- to understand how to make applications for the full range of courses.

7. Management of provider access requests

7.1. A provider wishing to request access should contact the designated individual in each academy.

8. Nexus MAT Careers Education Governance structure

8.1. In Nexus Multi Academy Trust will, through this policy and associated quality assurance systems, reaffirm their longstanding commitment to ensuring high quality careers guidance that promotes pupils' best interests and meets their real needs.



9. Premises and facilities

- 9.1. The academy will make the main hall, classrooms or private meeting rooms available for discussions between the provider and students, as appropriate to the activity.
- 9.2. The school will also make available AV and other specialist equipment to support provider presentations. This will all be discussed and agreed in advance of the visit with the Careers Leader or a member of their team.
- 9.3. Providers are welcome to leave a copy of their prospectus or other relevant course literature at the academy. This information will be made available to pupils at all times and should be adapted to meet the communicative needs of the pupil.